

A-dec for DSO

Reliability, unparalleled support, and planned efficiency—for superior patient care.

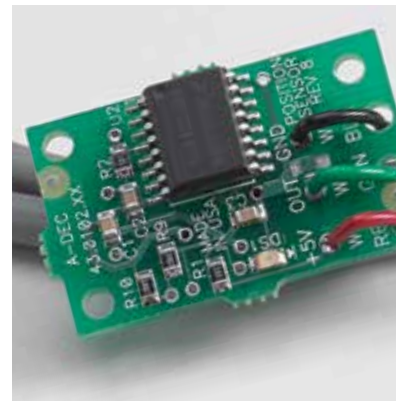


 a dec[®]

The A-dec Difference

Built for Life

At A-dec, no detail is too small, right down to the bolts that go into our products. That's why we manufacture a large majority of our finished dental equipment from raw materials: an essential factor in ensuring quality. Because while these parts may not be visible to the eye, they make the difference in the life, comfort and functionality of each and every product that bears our name. And to your business, that's everything.



Control block – Patented design promotes clean treatment water with every activation.

Lift cylinder – A-dec built and engineered with robust hydraulics and fewer parts.

Chair position sensor – A-dec technology uses precise electronic sensors and digital signals.



Why A-dec

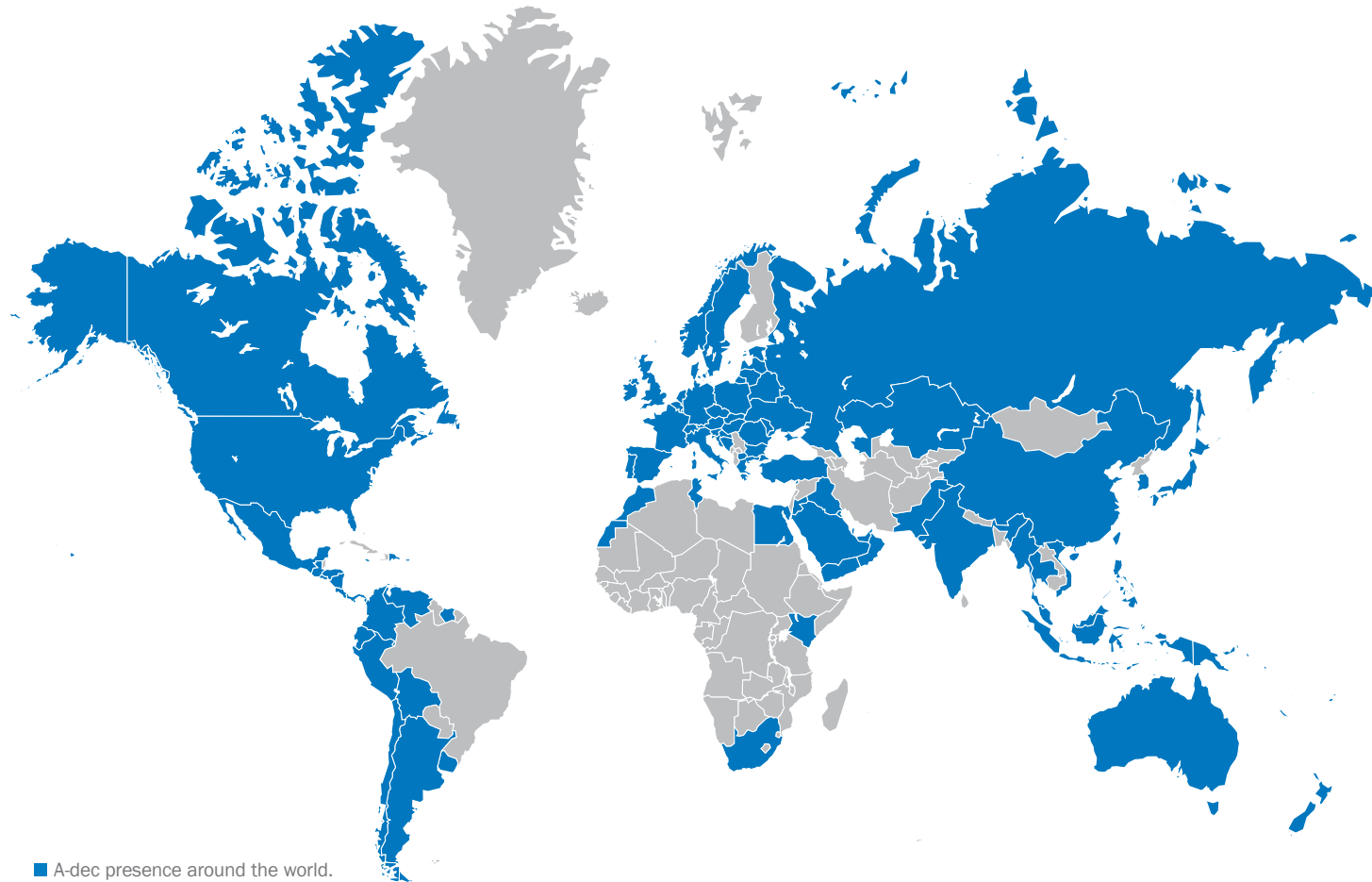
Quality impacts profitability.

A-dec understands the importance of keeping your Dental Service Organization's chairs operational and efficient, while offering the ultimate patient experience.

It all began in 1964, with the simple mission of getting it right. This vision not only helped revolutionize the world of dentistry, but created a legacy to make the best better. Today, A-dec is the world's leading dental equipment manufacturer. We design, engineer and produce our equipment in our own state-of-the-art manufacturing and testing facilities, to ensure quality right down to the last bolt. We've built our reputation on creating reliable dental equipment solutions to better the lives of dentists and their patients worldwide.

Worldwide

The global choice of schools and governments.



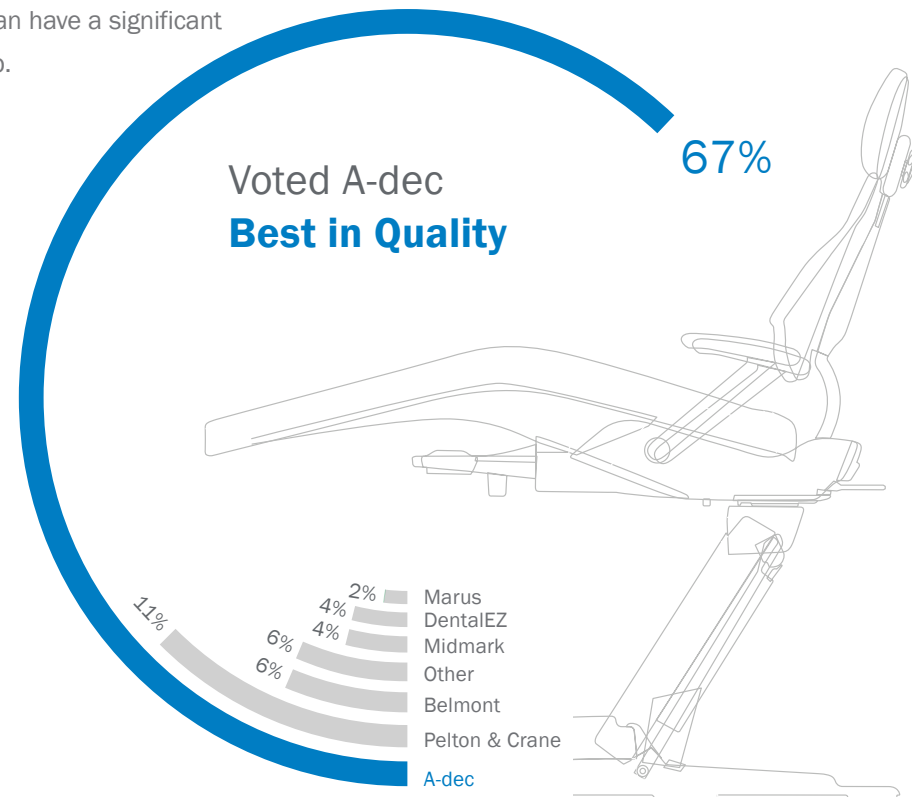
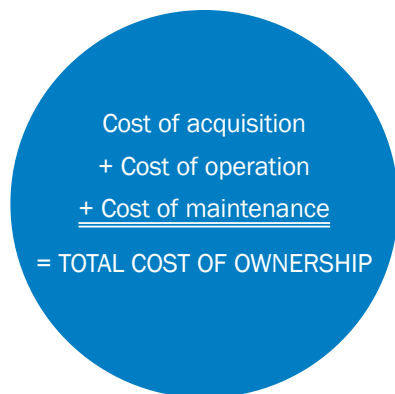


Long-Term Value

What is your total cost of ownership?

The true cost of dental equipment goes beyond the purchase price. A-dec calls it the “total cost of ownership.”

It can take a lot of time and research to find the right equipment. Consider reliability, maintenance, downtime, parts availability and lead times—all factors that contribute to the total cost of ownership. Are you looking for the lowest price or the best long-term value? The answer can have a significant financial impact on your organization. If you have questions, we’re here to help.



Independent surveys were completed September 2015, and included 201 general dentists in the U.S.

Top Choice

The difference is in the details.

More dental schools and government facilities worldwide use A-dec than any other dental equipment manufacturer. They have continually chosen A-dec for nearly 50 years. Considering the rigorous selection process involving educators, administrators, dentists, accountants, procurement officers, property engineers, volumes of third-party data—and lengthy evaluation periods—that's a lot of criteria to pass. Still, A-dec is the top choice, with three out of four dental schools across the U.S. and Canada teaching with A-dec. It's an investment with many future returns.



Every dentist would rather perform
dentistry,
not dental equipment repair.

Scott Parrish | A-dec CEO & President



Responsive Support

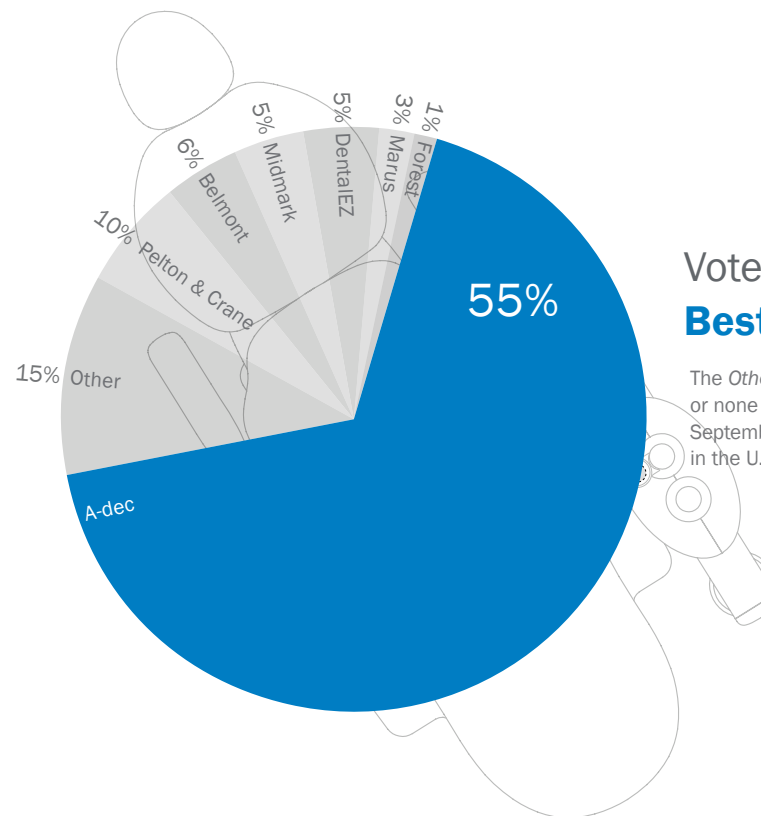
We'll keep you up and running.

When you call A-dec, an actual person answers the phone, so there's no more wasting time in an endless loop of transfers. Our Customer Service Representatives are ready to answer all of your questions about every A-dec product, no matter how long it's been in service. They are certified and technically trained to help with everything from taking an order, to troubleshooting while on a video chat.

We know your time is valuable, so we'll do what it takes to get your problem solved. When business moves smoothly, your patients stay healthy—and so does your bottom line.

Technician friendly.

In order to provide the most durable and reliable dental equipment in the world, A-dec considers each part that goes into A-dec solutions. When we're designing and building our products, we refine, simplify and integrate with service technicians in mind. This means they will always have the right tools in their bags to get dentists up and running quickly. Problem solved. No surprises.



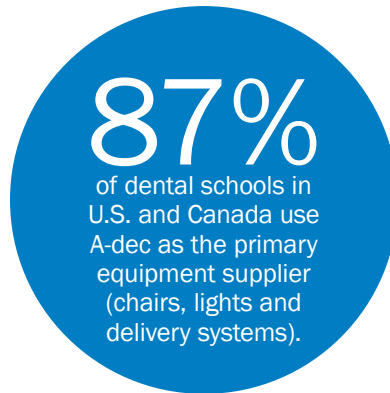
Voted A-dec Best After Sales Service

The *Other* category denotes dealer service technicians or none noted. Independent surveys were completed September 2015, and included 201 general dentists in the U.S.

By the Numbers

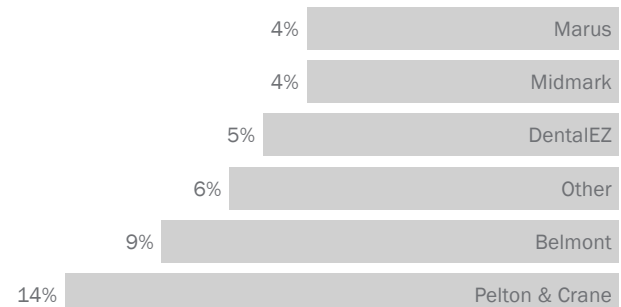
Dentists choose A-dec.

More dentists in schools, government and private practice choose A-dec than any other brand.



Voted A-dec as
Best Long-Term Value

58%



Independent surveys were completed September 2015, and included 201 general dentists in the U.S.

A-dec creates solutions that
work, and **work** consistently.

Joseph D'Angelo, DDS | La Jolla, California

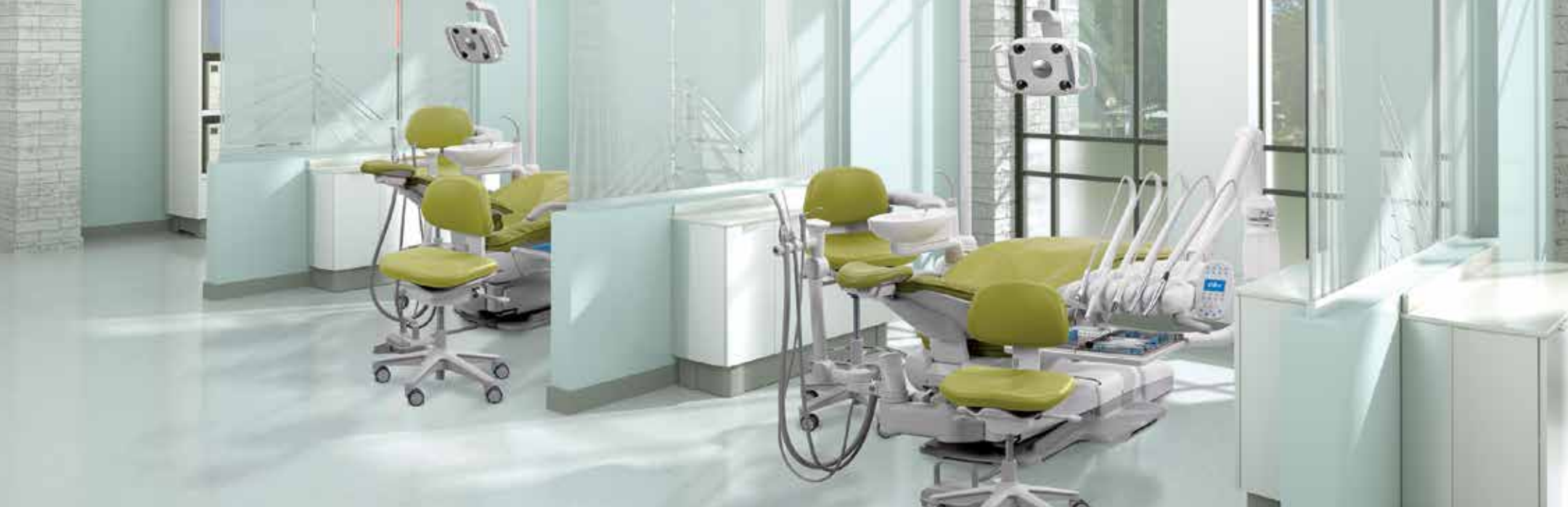












Your Partner for Success

A-dec is a privately-owned company, which means we make design and business decisions without a single compromise to long-term success or creative solutions. That's one of the reasons schools and governments around the world choose A-dec equipment. So wherever you are, we're ready to partner in your success. Our DSO team is here to support you.

DSOcustomerservice@a-dec.com



A-dec Headquarters

2601 Crestview Drive
Newberg, Oregon 97132 USA
Tel: 1.800.547.1883 within USA/CAN
Tel: 1.503.538.7478 outside USA/CAN
Fax: 1.503.538.0276
a-dec.com

A-dec, the A-dec logo, A-dec Inspire, Cascade, Century Plus, Continental, Decade, ICX, ICV, Performer, Preference, Preference Collection, Preference ICC, Radius, and reliablecreativesolutions are trademarks of A-dec Inc. and are registered in the United States and other countries. A-dec 500, A-dec 400, A-dec 300, and A-dec 200 are also trademarks of A-dec Inc. None of the trademarks or trade names in this document may be reproduced, copied, or manipulated in any manner without the express, written approval of the trademark owner.

Certain touchpad symbols are proprietary to A-dec Inc. Any use of these symbols, in whole or in part, without the express written consent of A-dec Inc. is strictly prohibited.

The colors and products shown may vary from the actual materials and are subject to change without notice. Please see your authorized A-dec dealer for accurate color samples and the most current product information.

©2019 A-dec Inc. All rights reserved.
85.0804.00/OP/500/2-19/Rev B

