

EMPOWERING YOU.





passionate, powerful and personal



EMPOWERING YOU TO REACH YOUR GOALS.

What's your dream? Working in an established practice? Starting in a large group setting to avoid overhead? Giving care to the underserved at home or abroad? Maybe you want to start your own practice. Whatever career path you choose, A-dec is here to help you—whether you have our equipment or not. We hope you'll think of us as a partner in your journey.

From our perspective in the industry, we've curated some topics we felt would be important to guide you along your path. Just be YOU and let your career reflect that.

Find out more: a-dec.com/empoweringyou

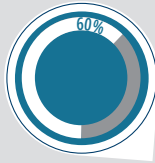
WHO IS A-DEC®: *We believe that simplicity is elegant, knowledge is imperative, and deep understanding is the foundation of all we do.*

Why do so many educational facilities choose A-dec?



DOCTOR RECOGNIZED

57% of dentists surveyed in a 2022 independent study* voted A-dec best in quality.



GUARANTEED A-DEC RELIABILITY

All chairs and equipment are backed with a 5-year warranty—10 for hydraulic lift components.

HIGHER ROI



Long product life and efficient performance mean less downtime and more peace of mind.

SIMPLIFIED MAINTENANCE

Smart, intuitive designs with fewer moving parts lowers risk of failure.



LONG-TERM VALUE

52% of dentists surveyed in a 2022 independent survey* voted A-dec the best long-term value.



**Independent surveys were completed 2022 by The Key Group, Inc. and included 200 general dentists in the U.S. Supporting data available upon request.*

TOP EQUIPMENT CHOICE FOR DENTAL SCHOOLS.

We meet again.

Did you know that you've probably spent some long days with A-dec equipment? A-dec is in 59 out of 70 US Dental Schools, 8 out of 10 Canadian Schools and over 400 higher education institutes around the world, so likely yours, too. And like anything familiar, comfort is key. We've been collaborating with dental professionals since 1964, designing simple and intuitive whole operator solutions that enrich the health and well-being of dental practices worldwide.

WHO IS A-DEC: *We believe in empowering dentists to focus on what truly matters most: your patients.*



What do you need to know if you want to start your own practice?

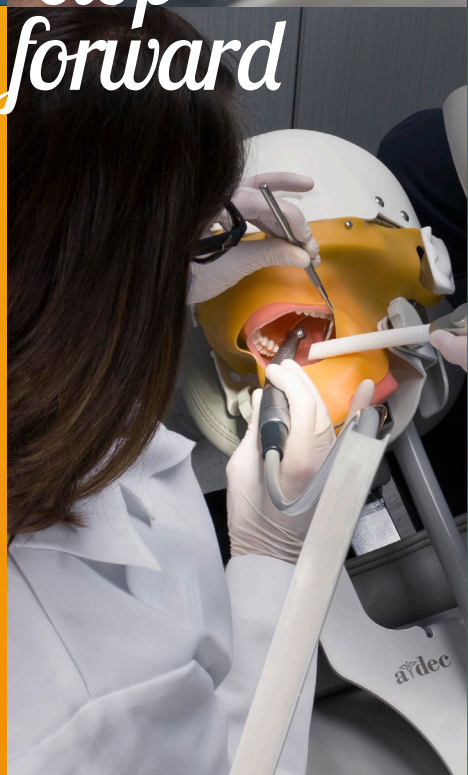


Learn tips and principles to design your dream dental office.

never stop moving forward



A clear financial picture is essential for your success. Learn budgeting, financing and hidden costs.



Has anyone taught you about ergonomic positioning to help prevent pain?

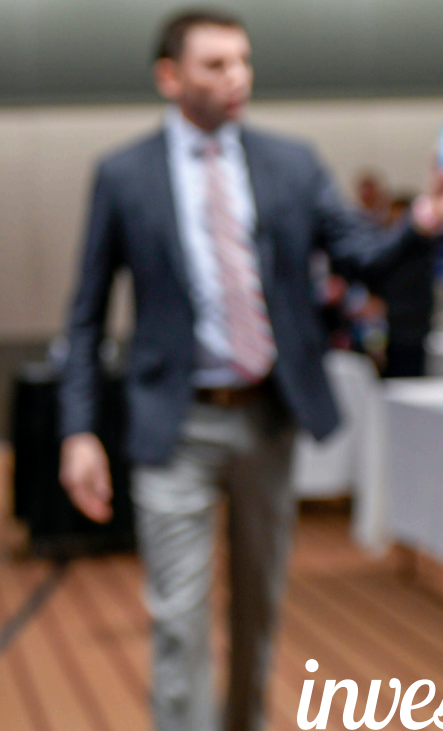
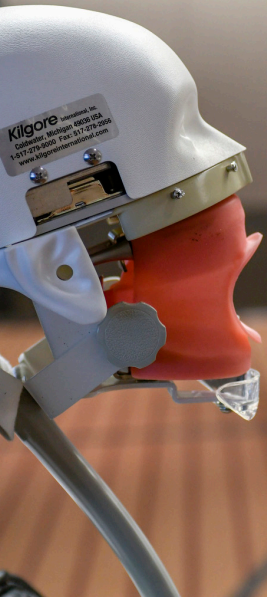
NEVER STOP LEARNING.

Here's a start: A-dec offers for-credit CE courses that you may find helpful. The topics change from year to year, but subjects may include:

- Designing your office
- Creating a business plan
- Financing your practice
- What you need to know to start your own practice
- Angles of Access - learn the best ergonomic positioning

View current CE courses: [a-dec.com/CE](https://www.a-dec.com/CE)

WHO IS A-DEC: *We believe in empowering you to reach your goals.*



invest in your posture

MINIMIZE THE TOLL ON YOUR BODY AND
MAXIMIZE YOUR TIME OUT OF THE OFFICE.



WORKFLOW

Purposeful. Intuitive. Efficient.



ERGONOMICS

Moveable. Adjustable. Comfortable.



ENVIRONMENT

Inviting. Modern. Calm.

NOT FEELING ANY PAIN...YET?

Intensely focused on procedure and patient, you don't realize that you've just spent the last two hours contorted. Until the pain hits.

Learn to optimize your position

A-dec teaches an Angles of Access CE course to help you untwist and learn new healthy ways to position yourself for a clear view into every region of the oral cavity. After the course, you can download the app for reference. It's an important step to a long career and balanced life, because when you feel good at the end of the day, you have energy for life after 5:00.



CHECK OUT THE A-DEC ANGLES OF ACCESS APP
Download from your App Store or Google Play.

WHO IS A-DEC: *We believe in innovation. Work-life comfort.
And the right to excess energy at the end of the day.*



Essential A-dec equipment donations to Mercy Ships International has allowed us to help provide decades of dental care to developing nations.

Financial and equipment donations to Medical Teams International furnish mobile dental clinics, which provide urgently needed care to underserved populations.



we care



Through 2020, more than **80,000** patients have received care from outreach volunteers using the portable Rota-Dent and TotaChair units.

MAKE A WORLD OF DIFFERENCE.

A-dec has been an active part of neighboring schools and communities since the company's inception. The founders, Ken and Joan Austin, quickly realized that positive change could extend far beyond state borders—even reaching underserved populations around the world. In the late '60s, the Austins formed a partnership with Rotary and engineered the Rota-Dent, a portable dental control unit. Through the years, A-dec donated more than 2,300 Rota-Dent units. For decades, the creation of TotaChair, a readily mobilized, quick-setup dental chair, addressed the needs of temporary settings in remote locations.

A-dec considers it an honor to support mission dentistry throughout the world. With consistent commitment to improving the lives and well-being of dentists and their patients, we can make a difference.

WHO IS A-DEC: *We believe in moving the dental community forward.*



BE THE BEST YOU



A-dec Headquarters

2601 Crestview Drive
Newberg, Oregon 97132 USA

P: 1.800.547.1883 within USA/CAN

P: +1.503.538.7478 outside USA/CAN

F: +1.503.538.0276

a-dec.com

All trademarks in this document are subject to the trademark rights of A-dec, its affiliates, and their collective suppliers in the United States and foreign countries.

©2023 A-dec Inc. All rights reserved. 85.0868.00/BB/1k/3-23/RevC



a-dec.com/empoweringyou

